

# Rayat Shikshan Sanstha: Governing Bodies

President

Vice President

Chairman-Managing Council

Secretary

Joint Secretary  
(Secondary)

Joint Secretary  
(Higher Education)

Auditor

College Development  
Committee

Principal

Regional  
Office -South

Regional  
Office -  
North

Regional  
Office -  
Central

Regional  
Office -West


Regional Office  
-Raigad

Regional Chairman

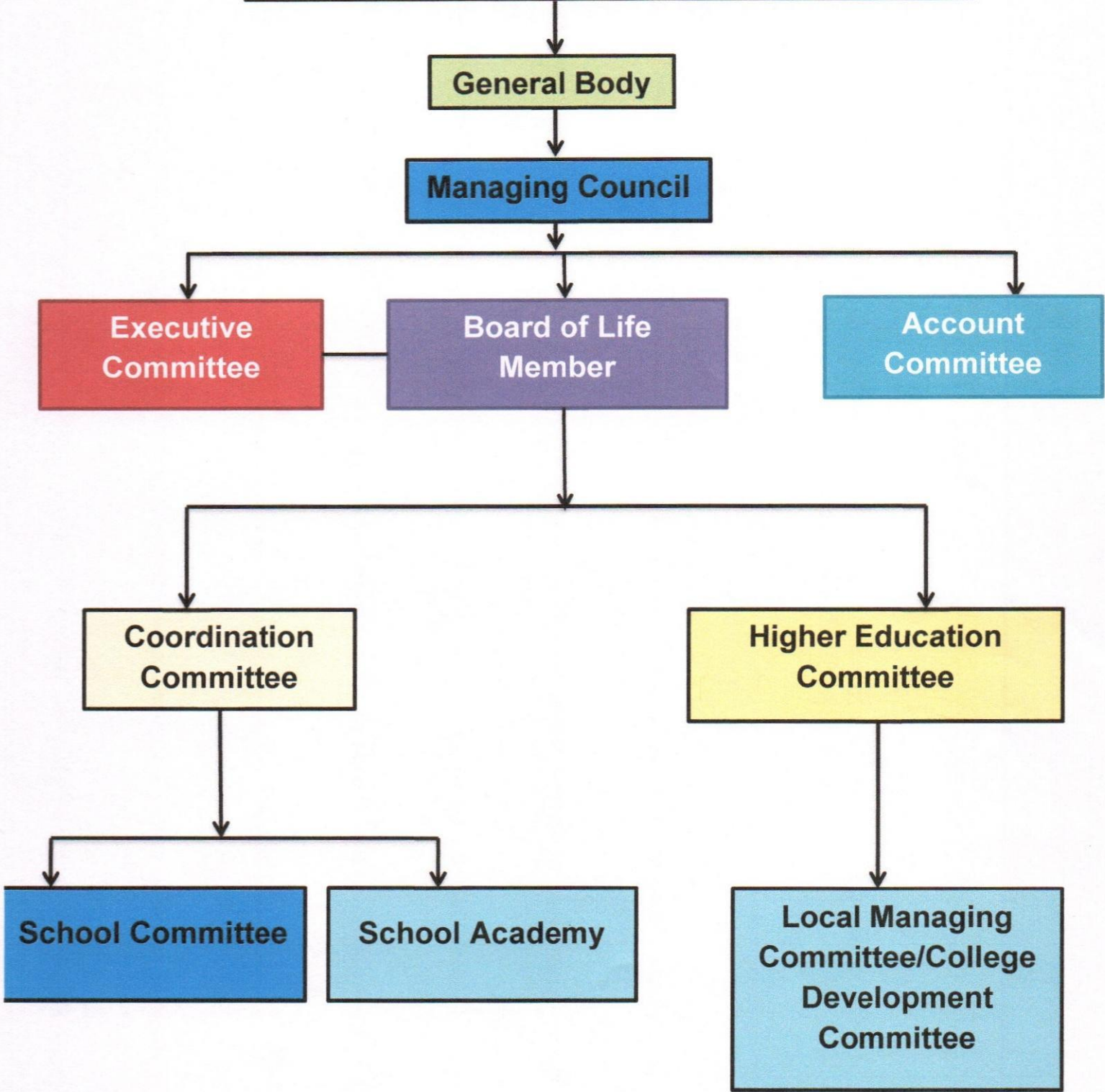
Inspector

Head Master



  
PRINCIPAL  
MAHATMA PHULE MAHAVIDYALAYA  
PIMPRI, PUNE-411 017.

**Rayat Shikshan Sanstha: Committees**



  
PRINCIPAL  
MAHATMA PHULE MAHAVIDYALAYA  
PIMPRI, PUNE-411 017.

## College - Organogram

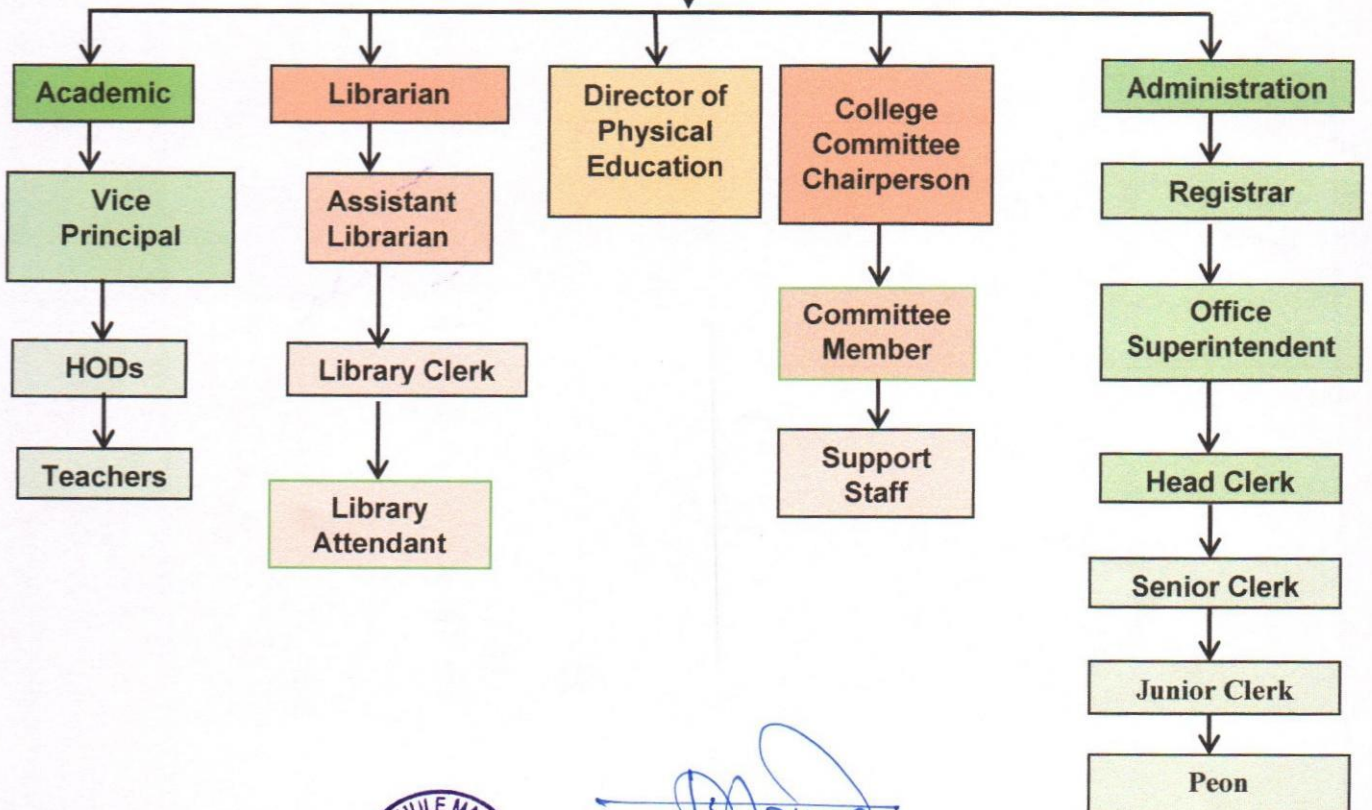
Rayat Shikshan Sanstha

Mahatma Phule Mahavidyalaya, Pimpri, Pune-17

College Development Committee

Principal

IQAC



  
PRINCIPAL  
MAHATMA PHULE MAHAVIDYALAYA  
PIMPRI, PUNE-411 017.



**Rayat Shikshan Sanstha, Satara**  
**Head Office**  
**Organizational Structure: Department Overview**

Sr	1	2	3	4	5	6	7	8	9	10	11
Department	Higher Education	Secondary Education	Audit	Establishment	Accounts and Finance	Estate	Probodhini	PRO	Agriculture	Legal	University
Head of the Department	Jt. Secretary (H.E.)	Jt. Secretary (S.E.)	Jt. Secretary (Audit)	Establishment Officer	Finance Officer	Estate Officer	Managing Director	Compliance Officer	Agriculture Officer	Law Officer	Pro- VC
1	Colleges	Pre-Primary-Nursery to SSC	Audit	Establishment 1. Higher 2. Secondary 3. Sanstha	Finance	Land (a) Non Agricultural (b) Agricultural	Probodhini Projects	Publicity	Projects	Opinion on Legal Matters	
2	Ashram Schools	Five Region	Audit Compliance	HRD	Accounts	Record Keeping of Farm i.e. Agricultural Land.	Short Term Courses	Liaising	Agri. R & D.	Legal guidance to branches	
3	NAAC/UGC/ Proposals	Jr. Colleges		Staff Welfare	Taxation	Building Construction	Publications	Officers Coordination	Guidance to Academic Programs	RTI	
4	Skill Development	Technical School		Telephone	Budget	Engineer Services Architect Services Structural Services	Centenary Year Celebration	Record	Cultivation of Agri Land and Allied Activities	MoU	
5	Rayat Science Projects	MCVC		Press				Inward-Outward	Marketing of Agri Produce	Purchase	
6	CIH	ITI		Others				Security	Implementation of Schemes of Govt.		
7	Autonomous Colleges	D.Ed.						IT Dept. (HOD)			
8	RIRD	English Medium School						Allied			
9		International School									
10		Open School									
11		Examinations									
12		Rayat Science Projects									



**PRINCIPAL**  
 MAHATMA PHULE MAHAVIDYALAYA  
 PIMPRI, PUNE-411 017.



**Secretary**  
 Rayat Shikshan Sanstha, Satara