

## Infrastructure & Facilities

The management of college tries to create and develop the infrastructure to facilitate effective teaching learning process and also maintain academic ambiance. For this, college tries to generate enough funds from its own resources and through various fund agencies for infrastructural development. College uses infrastructure optimally to thrive academic activities.

### College Campus:

College maintains two campuses viz. Main Campus at Pimpri Waghere and additional unit at Sambhaji Nagar, Chinchwad. The main campus has 3314.91 sq.m. space which contains various facilities like classrooms, library, laboratory, seminar hall, office etc. All the regular degree courses of Arts, Science and Commerce are engaged here.

Sambhaji Nagar campus (1229.73 sq.m) has Competitive Examination Guidance Centre, Entrepreneurship Development Cell and a digital classroom cum Seminar Hall where seminars, workshops, conferences, guest lectures and co-curricular activities are conducted. There is a Library, Reading Hall and other three classrooms in the same building which are used for different vocational courses and competitive examination guidance sessions. There is a Vermi-compost unit and *Azolla* Culture pond on this campus.



### Classroom:

There are five programs in all in this college: Arts, Commerce, Science, B.B.A. (Computer Application) and Bachelor of Vocational Education in Mass Communication. There are 35 classrooms in all and the policy has been maintained to make the most of this infrastructure by conducting in three shifts.

It includes UG, PG and short term course classes. Maintenance of these facilities is done by support service staff.



### **Library:**

Mahatma Phule Mahavidyalaya has a computerized library with internet and multimedia facilities. It has a very good collection of text books, reference books, hand books, national and international journals and periodicals. It is open for all faculty and students from 8 a.m. to 6 p.m. Some key features of library is highlighted below:

- Provision of computers to access e-learning resources like e-journals and browsing.
- Implementation of OPAC and INFLIBNET.
- Enrichment of Library resources.
- Library Blog ([mpcollegelibrary83.blogspot.com](http://mpcollegelibrary83.blogspot.com))
- Latest acquisitions of books, journals and other reading material are available.
- Reserved seating arrangement.
- Free Book-Bank facility available for physically challenged students.
- Access is given to differently abled students on a preferential basis.
- A computer with headphones and CDs of certain books are available.





#### Laboratories:

- **Physics Laboratory** is equipped with Thin Film Preparation Units Viz. Spray Pyrolysis Unit, Chemical Bath Deposition Unit, Solvothermal Synthesis Unit, Hydrothermal Synthesis Unit, UV Potential Photostat IR, etc. The lab is also equipped with Characterization Techniques such as Resistivity measurement Unit and Gas Sensing Measurement Unit to conduct practical, projects and Research Activities.
- **Geography Laboratory** is equipped with Global Mapper Software, Sediment Analyser, Plane Table, Dumpy level, Theodolite and GPS instruments (for land measuring), SOI Toposheet, OS Toposheet, Weather Maps, Aerial Photography and Satellite Imagery for Interpretation to conduct practical, Projects and Research work.
- **Microbiology Laboratory** is equipped with Ultracentrifuge, Laminar Air - Flow, Filtration Assembly, Electrophoresis Unit etc. to conduct practical and research work. For research in Molecular Biology. The lab and infrastructural facilities of Bio-Era Life Sciences Pvt. Ltd. are also used with whom we have signed an MoU.
- There are 08 Science Laboratories, 01 English Language Laboratory, 01 Commerce Computer Laboratory, 01 Psychology Laboratory, 01 Computer Laboratory for BBA (CA), 01 GIS Laboratory to conduct practical and research projects. All these laboratories are well equipped and supported by ICT facilities to strengthen the teaching learning process.



### Seminar Hall:

For co-curricular activities the college has 03 multi - purpose halls equipped with audio visual facilities such as LCD Projector, slide projector, script reader, sound system, microphones and good seating arrangement



### Health Care Facilities:

- Medical services are provided by the General Medical Practitioner in the nearby area of the college. The college has signed an MoU with the Doctors (Dr. Mahesh Mahajan and Dr. Mrs. Ashwini Mahajan).
- In case of any medical emergency the patient is shifted to multispecialty hospitals in nearby areas (D.Y. Patil Hospital, Yashwantrao Chavan Memorial Hospital, Pimpri and Aditya Birla Hospital, Niramay Hospital, Chinchwad).
- The First Aid Box is maintained on the campus.
- The medical check-up of the First year student of B.A. / B.Com. / B.Sc. / BBA (CA). / M.A. / M.Com. / M.Sc. is conducted every year.
- Awareness lectures on health and hygiene, Diet, etc. are arranged.



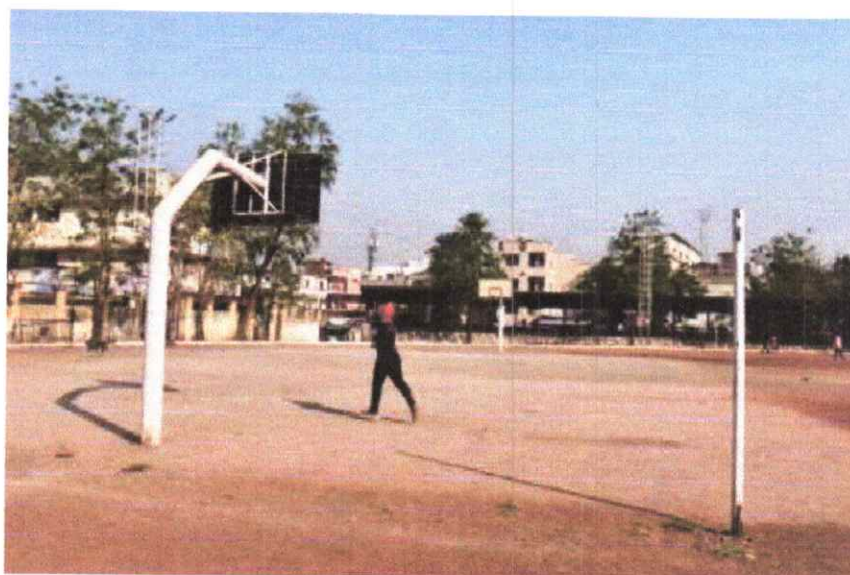


### **Sports:**

Physical education is the integral part of the total education system and the present National Education Policy 2020 emphasizes promotion and development of sports and physical education. The main role of this department is to promote sports by organizing sports activities at Inter Collegiate/ Inter Zonal/ Inter University level. Our college students participate in Inter-collegiate sports events regularly. To promote sports and health awareness among the students, college teams participate in almost all sports events. Students of this college have been selected to participate in Savitribai Phule Pune University team, Maharashtra state and India team at Asian and International tournament and some of them have received sports scholarships awarded by Savitribai Phule Pune University, PCMC, Pimpri, and Pune.

### **Sports Ground:**

The college has huge playing fields available for the students. Basketball, Football, Kabaddi, Kho-Kho, Handball, and Volleyball play grounds are available for daily practice. Also available indoor games facilities viz. Table-Tennis, Chess, Carom.

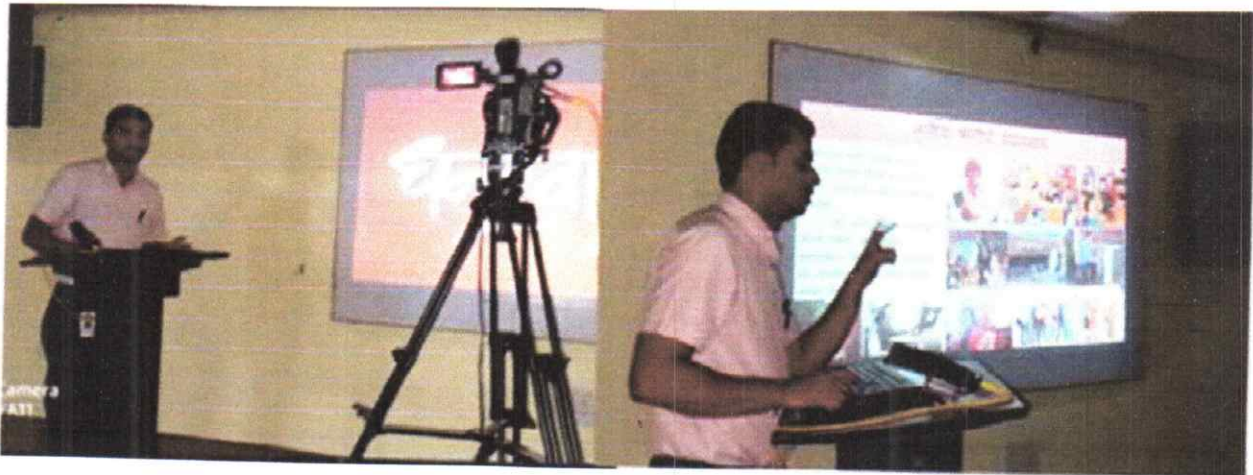


**Physical Activities:**

Every year college organizes various inter-class competitions to boost the morale of the students and to have a competitive edge. Selected players represent college in Intra-collegiate, Inter-zone Competitions. Many from these teams represent at University, National and International level competitions.

**Video Recording facilities:**

College has installed a video recording facility at Sambhaji Nagar Campus where the team of B.Voc (Mass Communication) conducts recording and editing of the educational videos. Necessary equipment is available to perform the activity.

**Solar Panel:**

College has installed Solar Panels of 15 KV and the electricity generated is transmitted to MSEB which is ultimately reduced from the monthly bill of college. This has drastically reduced the electricity bill of the college.





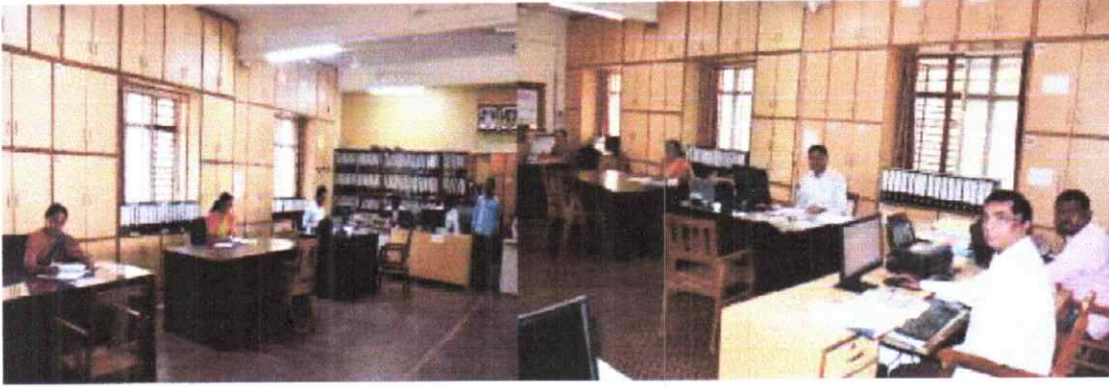
**Staff room:**

The Common Staff Room is available for teaching community equipped with necessary facilities.



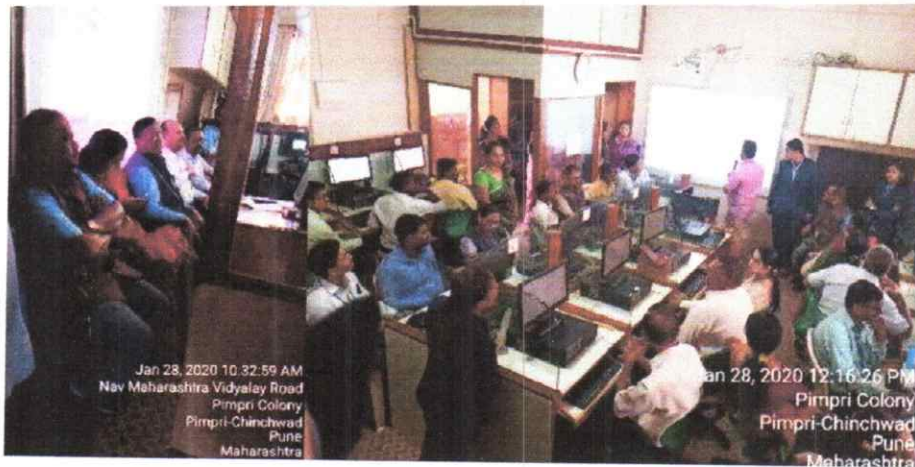
**Administrative Section:**

College office is situated at Ground floor and accessible to all the stakeholders of the society. It is fully computerized with a broadband facility. It is heading towards a paperless office for it prefers ETH software for admission and student record and Tally software for auditing purpose.



### Computer Lab:

We have three functional computer laboratories viz. B.B.A. (CA) laboratory, Commerce laboratory, English language laboratory. These laboratories are equipped with adequate furniture and connected with 50mpbs broadband connection. Regular practical and some skill development courses are carried out in these laboratories. For this, some MoUs have been signed.



### Reading Hall:

College administration tries to provide maximum facilities to the students. College fulfils student demand to provide a reading hall on its Sambhaji Nagar Campus for boys and girls. This facility could be availed by any student of the college between 08: 00 am to 5:00 pm on all the six days of a week except government holidays.



  
PRINCIPAL  
MAHATMA PHULE MAHAVIDYALAYA  
PIMPRI, PUNE-411 017.