

**Rayat Shikshan Sanstha,s**  
**Mahatma Phule Mahavidyalaya,Pimpri**  
**Feedback Analysis**  
**Analysis of Students Feedback on Curriculum**  
**Academic Year 2019-2020**

Q.1 E-mail ID Total 904 students given their email id

Q.2 Name of Department

Dept	Commerce	Arts	Science	BBA	B.Voc
No. of Students	505	137	206	56	0

Q.3. Name of students Total 904 students

Q.4 Address Total 904 students

Q.5 Mob No Total 904 students

Q.6

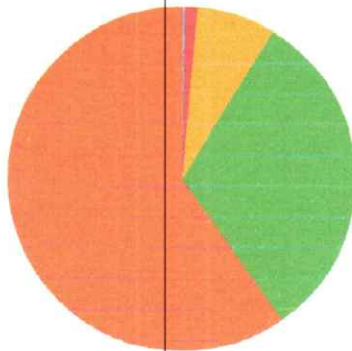
Faculty	Class	Numbers	Total
Commerce	F.Y	207	505
	S.Y.	150	
	T.Y	88	
	P.G.I	28	
	P.G.II	32	
Arts	F.Y	45	137
	S.Y.	45	
	T.Y	43	
	P.G.I	3	
	P.G.II	1	
Science	F.Y	59	206
	S.Y.	64	
	T.Y	54	
	P.G.I	15	
	P.G.II	14	
B.Voc	F.Y	0	0
	S.Y.	0	
	T.Y	0	
BBA	F.Y	24	56
	S.Y.	13	
	T.Y	19	

Q.1 1.How much of the syllabus was covered in the class?

आपल्या क्लासमध्ये अभ्यासक्रम किती पूर्ण केला जातो?

Percentage	0-30	30-54	55-69	70-84	85-100	Total	
Response		2	10	66	285	541	904

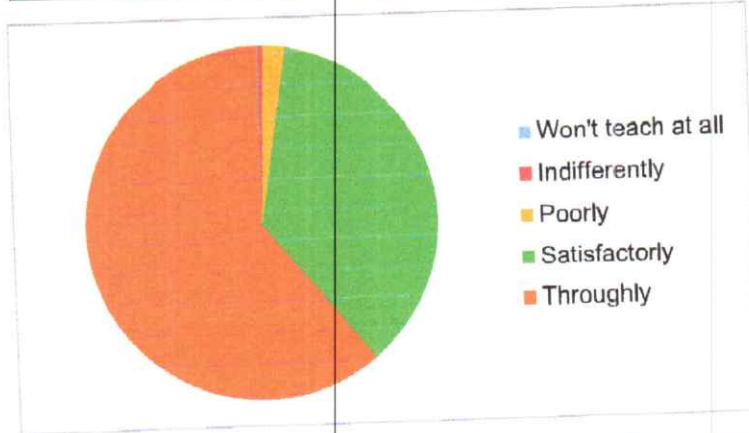
### Response



- 0-30
- 30-54
- 55-69
- 70-84
- 85-100

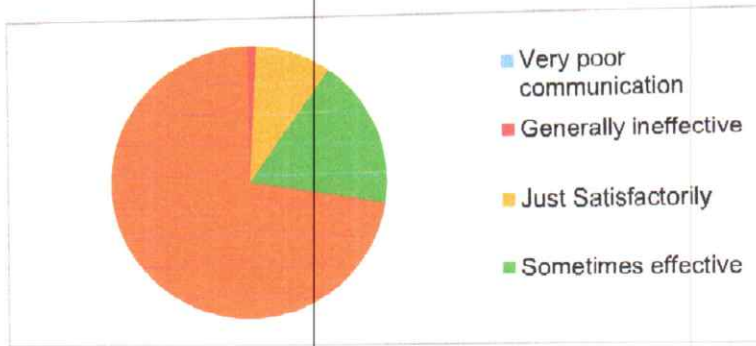
Q.2 How well did the teachers prepare for the classes?  
 क्लासमध्ये शिक्षकांची शिकवण्याची तयारी कशी असते?

Won't teach at all	Indifferently	Poorly	Satisfactorily	Thoroughly	Total
1	4	18	332	549	904



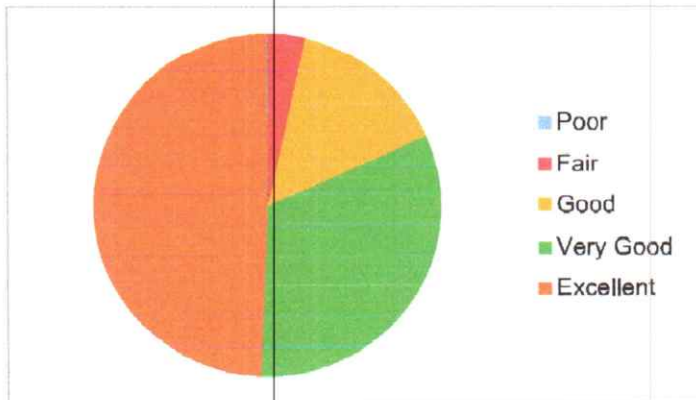
Q.3 3.How well were the teachers able to communicate? शिक्षक कशाप्रकारे संवाद साधतात?

Very poor communication	Generally ineffective	Just Satisfactorily	Sometimes effective	Always Effective	Total
0	8	81	160	655	904



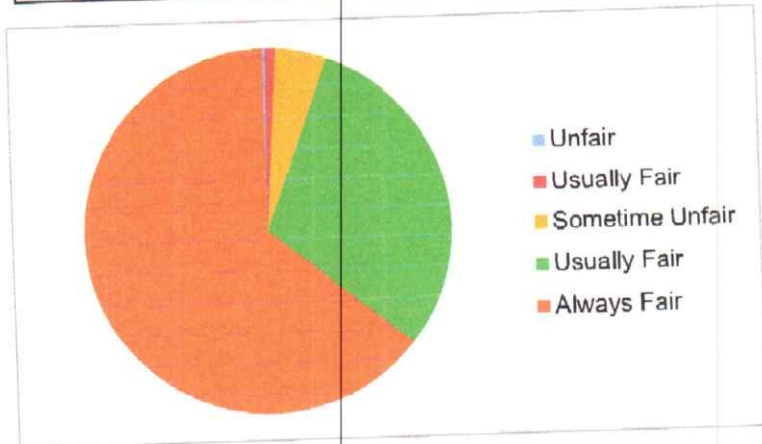
Q.4 The teacher's approach to teaching can best be described as  
 शिक्षकांचा शिकवण्याच्या बाबतीतील उत्तम दृष्टीकोण याचे वर्णन कसे कराल?

Responses	Poor	Fair	Good	Very Good	Excellent	Total
		1	31	133	293	446



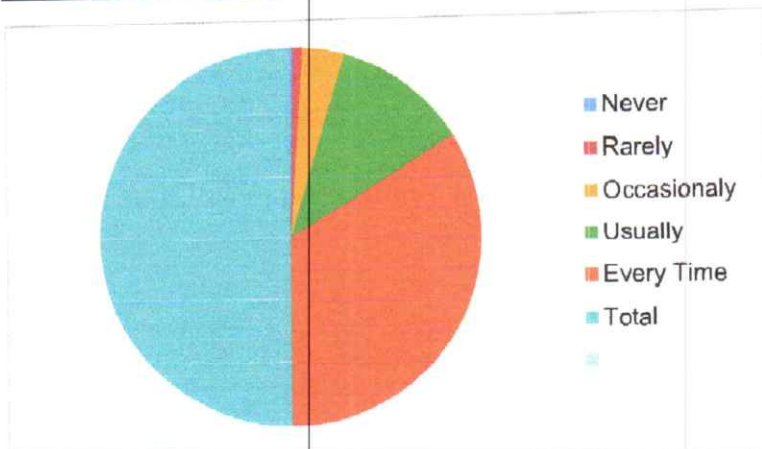
Q.5 5. Fairness of the internal evaluation process by the teachers.  
 शिक्षकांकडून केली जाणारी मूल्यंकन प्रक्रिया प्रामाणिकपणे/योग्य प्रकारे केली जाते

Unfair	Usually Fair	Sometim e Unfair	Usually Fair	Always Fair	Total
2	8	40	274	580	904



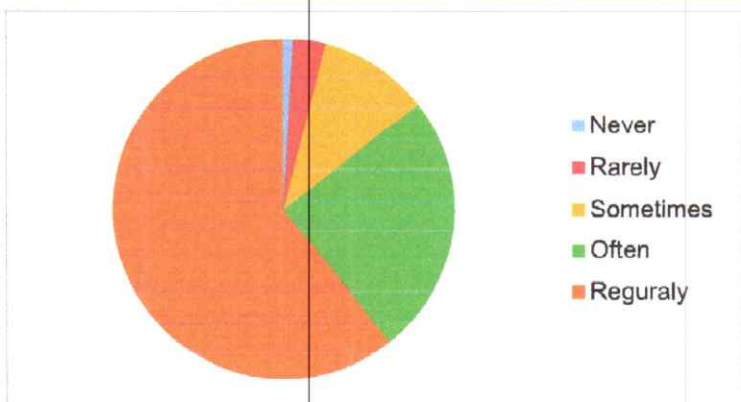
Q.6 6. Was your performance in assignments discussed with you?  
 तुम्ही गृहपाठमधील/परीक्षा केलेल्या कामगिरीची चर्चा तुमच्या सोबत केली जाते का?

Never	Rarely	Occasion ally	Usually	Every Time	Total
5	15	64	210	610	904



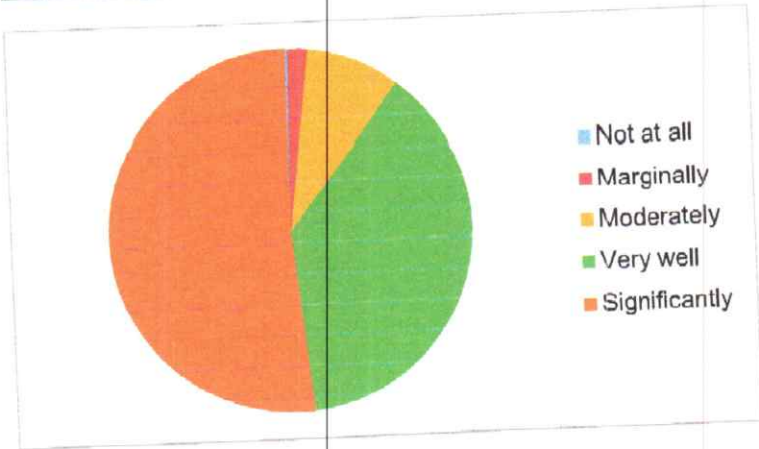
Q.7 The institute takes active interest in promoting internship, student exchange, and field visit opportunities for students.  
 तुमचे महाविद्यालय प्रशिक्षण, विद्यार्थी आदान प्रदान आणि सर्वेक्षण या सारख्या संधी उपलब्ध करून देतात का ?

Never	Rarely	Sometim es	Often	Regural y	Total
8	28	94	226	548	904



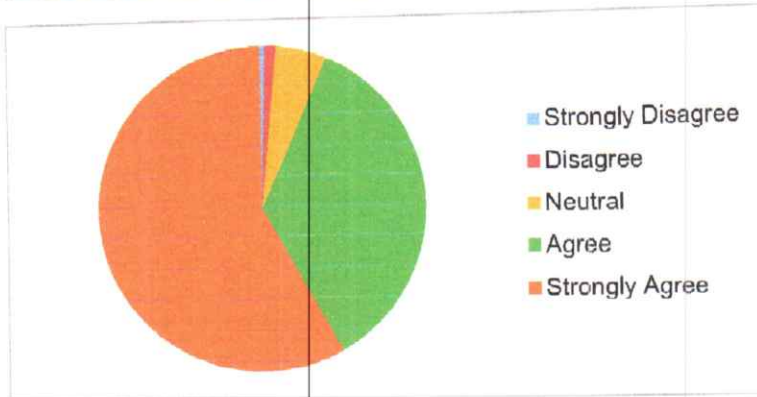
Q.8 8.The teaching and mentoring process in your institution facilitates you in cognitive, social and emotional growth.  
महाविद्यालयामधील शिक्षणाची व मार्गदर्शनाची तुमच्या बौद्धिक,सामाजिक आणि भावनिक वाढीमध्ये मदत होते का?

Not at all	Marginally	Moderately	Very well	Significantly	Total
2	16	76	344	466	904



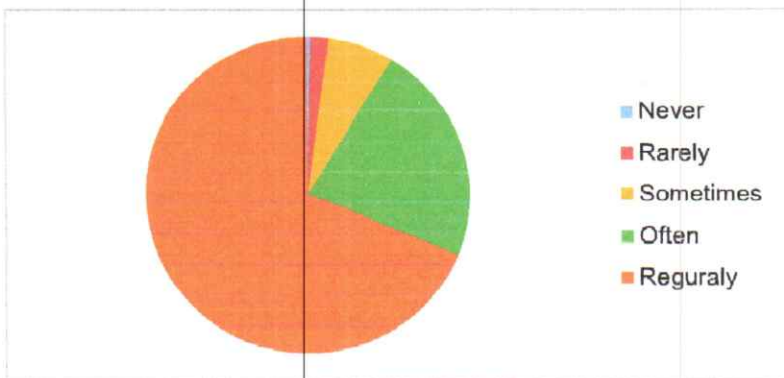
Q.9 9.The institution provides multiple opportunities to learn and grow  
तुमचे महाविद्यालय तुम्हाला अध्ययन व वाढीसाठी संधी उपलब्ध करून देते का?

Strongly Disagree	Disagree	Neutral	Agree	Strongly Agree	Total
4	10	45	320	525	904



Q.10 10.Teachers inform you about your expected competencies, course outcomes and programme outcomes.  
शिक्षक तुम्हाला तुमच्यातील अपेक्षित क्षमता, विषयाचे फलित आणि कार्यक्रमाचे फलित तुम्हाला सांगतात का?

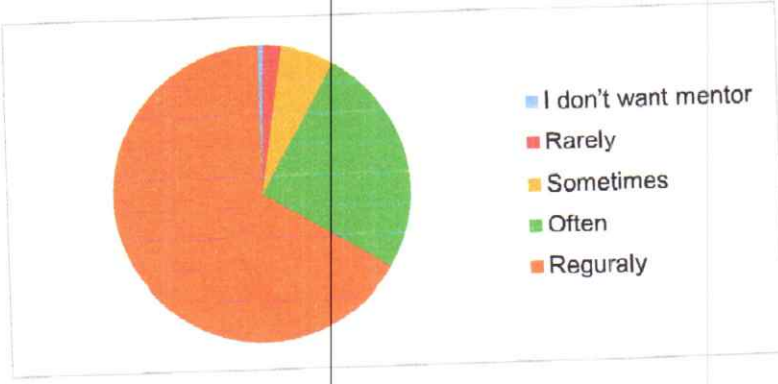
Never	Rarely	Sometime	Often	Reguraly	Total
3	16	60	202	623	904



Q.11 11.Your mentor does a necessary follow-up with an assigned task to you.  
तुमचे मार्गदर्शक तुम्हाला दिलेल्या कामाचा आवश्यक तेवढा आढावा घेतात का?

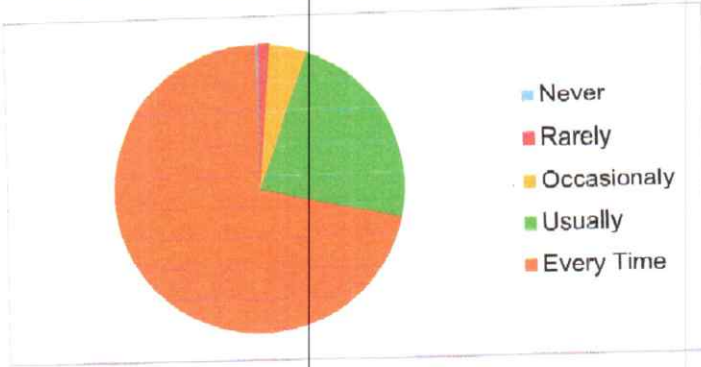
I don't want mentor	Rarely	Sometim es	Often	Regural y	Total
5	17	53	231	598	904





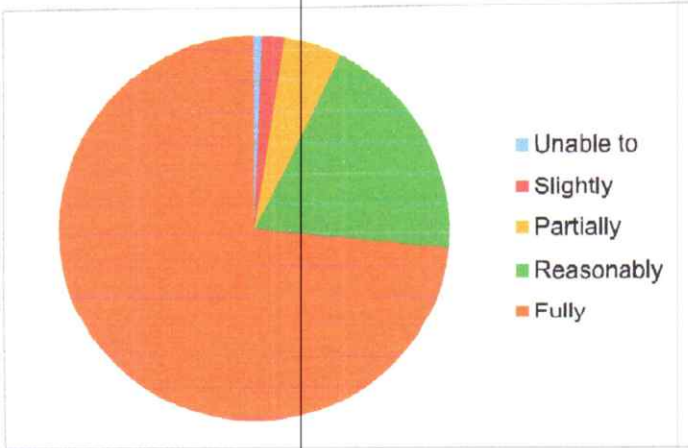
Q.12 12.The teachers illustrate the concepts through examples and applications.  
 तुमचे शिक्षक शिकवताना संकल्पना ह्या उदाहरण व प्रत्यक्ष वापर यासहित स्पष्ट करतात का?

Never	Rarely	Occasion aly	Usually	Every Time	Total
2	11	38	207	646	904



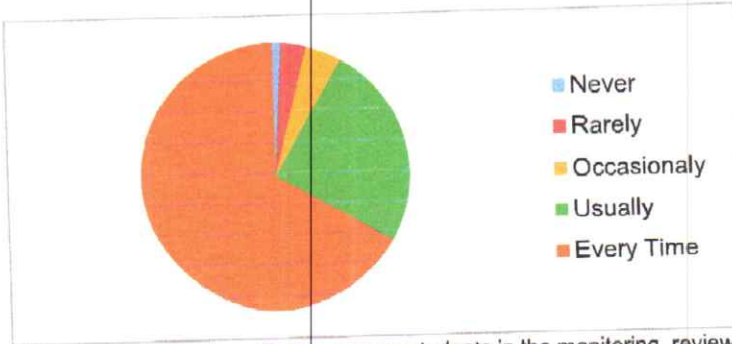
Q.13 13.The teachers identify your strengths and encourage you with providing right level of challenges.  
 शिक्षक तुमच्या मधील बलस्थाने ओळखून तुम्हाला संधीच्या योग्य पातळीवर जाण्यासाठी प्रेरणा देतात का?

Unable to	Slightly	Partially	Reasona Fully	Total
6	17	43	174	664
<b>904</b>				



Q.14 14.Teachers are able to identify your weaknesses and help you to overcome them  
 तुमच्यातील कमतरता शोधून ते दूर करण्यासाठी तुमचे शिक्षक सक्षम आहेत का?

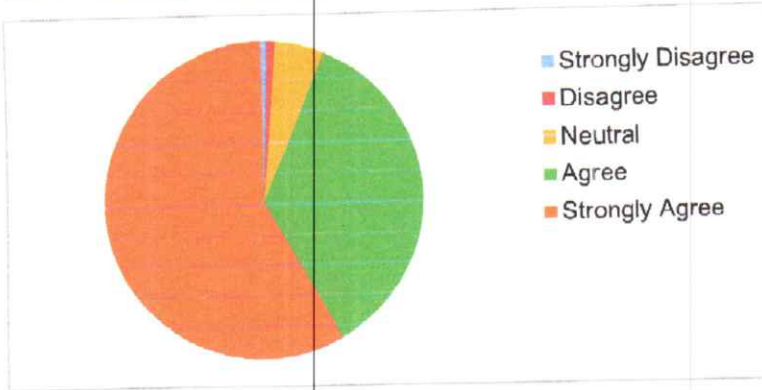
Never	Rarely	Occasion Usually	Every Tir Total
9	27	39	227
<b>602</b>			
<b>904</b>			



Q.15 15.The Institution makes effort to engage students in the monitoring, review and continuous quality improvement of the teaching learning process.

तुमचे महाविद्यालय विद्यार्थ्यांना मार्गदर्शन, प्रत्यभारण व अध्ययन-अध्यापन प्रक्रियेतील सततचे गुणवत्ता सुधारप्रक्रियेमध्ये समाविष्ट करतात का?

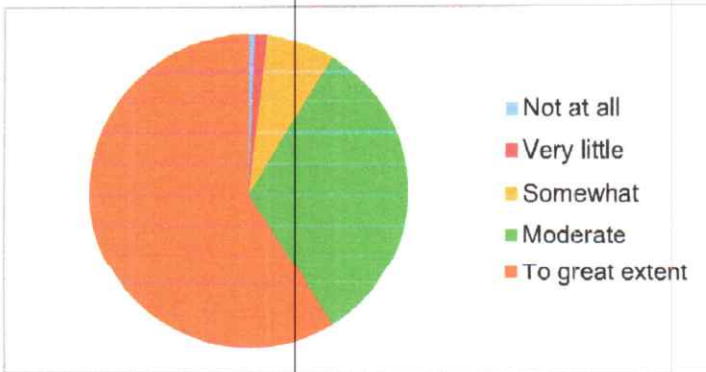
Strongly Disagree	Disagree	Neutral	Agree	Strongly Agree	Total
5	8	44	322	525	904



Q.16 16.The institute/ teachers use student centric methods, such as experiential learning, participative learning and problem solving methodologies for enhancing learning experiences

महाविद्यालय तसेच शिक्षक विद्यार्थी केन्द्रितपद्धतीमध्ये अनुभवात्मक अध्ययन, सहभागात्मक अध्ययन आणि समस्या निवारण प्रक्रिया पद्धतीचा अध्ययन अनुभव वाढविण्यासाठी वापर करतात का?

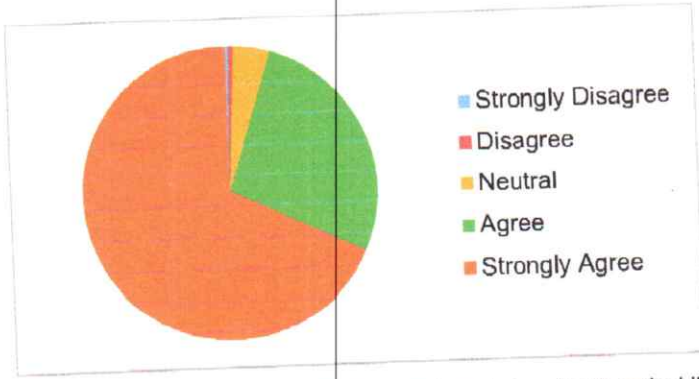
Not at all	Very little	Somewhat	Moderate	To great extent	Total
5	11	62	295	531	904



Q.17 Teachers encourage you to participate in extracurricular activities

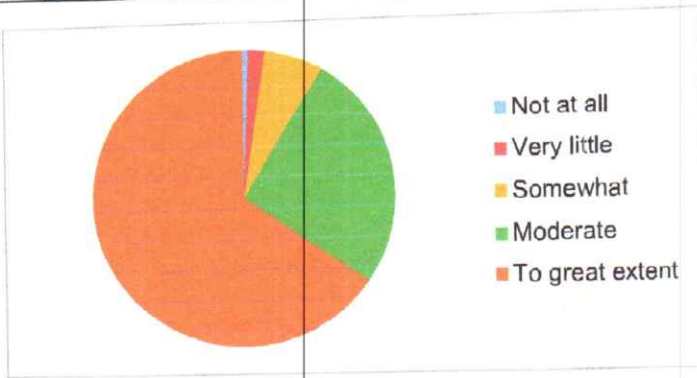
शैक्षणिकेतर उपक्रमामध्ये सहभागी होण्यासाठी तुम्हाला शिक्षक प्रेरणा देतात का?

Strongly Disagree	Disagree	Neutral	Agree	Strongly Agree	Total
3	5	36	245	615	904



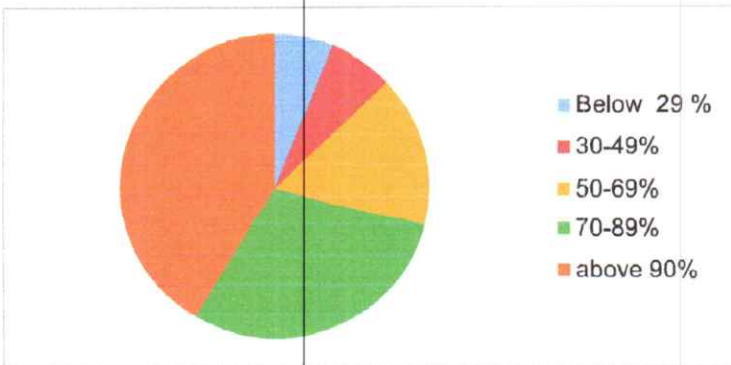
Q.18 Efforts are made by the institute/ teachers to inculcate soft skills, life skills and employability skills to make you ready for the world of work.  
 तुमचे महाविद्यालय व शिक्षक तुमच्यामध्ये कौशल्यधिष्ठीत वाढ तसेच रोजगारक्षम कौशल्य वाढ रुजवण्यासाठी प्रयत्न करतात का ?

Not at all	Very little	Somewhat	Moderate	To great extent	Total
6	15	57	236	590	904



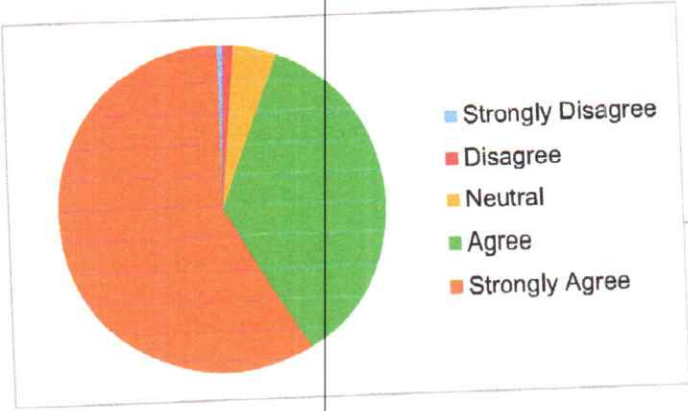
Q.19 What percentage of teachers use ICT tools such as LCD projector, Multimedia, etc. while teaching.  
 तुमचे शिक्षक LCD Projector, Multimedia इ. सारख्या आयसीटी आधारित अध्यापनाचा किती टक्के वापर केला जातो?

Below 29 %	30-49%	50-69%	70-89%	above 90%	Total
55	61	146	268	374	904



Q.20 The overall quality of teaching-learning process in your institute is very good

Strongly Disagree	Disagree	Neutral	Agree	Strongly Agree	Total
5	9	39	321	530	904



Q.21 Suggestion

Total 357 students given suggestion



*G.M.*  
PRINCIPAL  
MAHATMA PHULE MAHAVIDYALAYA  
PIMPRI, PUNE-411 017