

Rayat Shikshan Sanstha's
Mahatma Phule Mahavidyalaya, Pimpri, Pune -17
Department of Zoology
Apiculture : Wall Paper Making

Report (2021 – 22)

Class – S.Y.B.Sc.

Date – 21/05/2022

Department of Zoology organized **Apiculture: Wall Paper Making competition** on **29th May 2022** for **S.Y.B.Sc.** students. Apiculture :Wall Paper Making competition provided information about honey, pollen, honey comb, beeswax etc. Students aware about honey bees and got information about **apiculture can be taken as business opportunities**

For the excursion tour **37 students** were present & **02 faculty members**. Out of **37 students 22 were girls** and **15 were boys**. Copy of List of students and teachers attendance along with their signs is attached to the report.

S. Palis
HEAD
Department of Zoology
Mahatma Phule Mahavidyalaya
Pimpri, Pune - 17



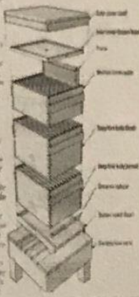
G. M.
PRINCIPAL
MAHATMA PHULE MAHAVIDYALAYA
PIMPRI, PUNE-411 017. &



MODERN METHOD OF APICULTURE

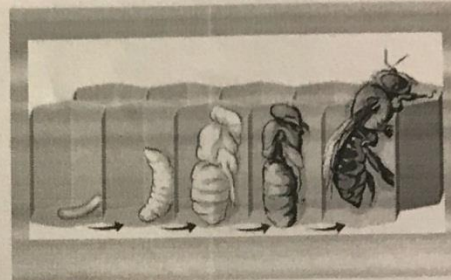


The modern method is based on scientific principles and is called "Beekeeping". It is a way of raising bees. The bee is kept in a box called the hive. The hive is made of wood and is divided into many small cells. The bees live in these cells and produce honey. The modern method is based on scientific principles and is called "Beekeeping". It is a way of raising bees. The bee is kept in a box called the hive. The hive is made of wood and is divided into many small cells. The bees live in these cells and produce honey.

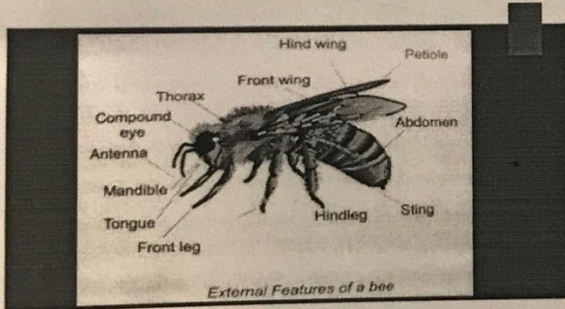


Dr. SUDHAR K. BANSODE
PUNE

Honey Bee Life cycle



Name - Prass Sakshi Sambhaji Ranjane
Std-S.Y Bsc
Roll no. - 2579



TRADITIONAL APICULTURE

Traditional Apiculture is the maintenance of bee colonies, commonly in man-made hives, by humans. Most such bees are honey bees in the genus *Apis*, but other honey-producing bees such as *Megachile* and *Osmia* bees are also kept.

Copyright reserved
Sakshi

UNBELIEVABLE FACTS

HONEY BEES are the only insect that produce human food.

- 15 bees produce 1 TSP of honey
- 11,500 bees produce 1 LBS of honey
- 121 bees produce 1 PINT of honey
- 8 LBS of honey is produced by 100,000 bees
- 1 worker bee produces 1/12 of a TSP of honey
- 200 bees produce 1 TSP of honey
- 1 worker bee produces 1/24 of a TSP of honey

The annual decline rate of HONEY BEES in 2016 was a staggering 4.4% and continues to rise each year. Mr. Avinash Deshmukh

BENEFITS OF HONEY

- Blood sugar regulation
- Probiotic
- Beautiful and healthy skin
- Reduce ulcers
- Soothes coughs
- Heal burns
- Boosts memory
- Treats wounds
- Anti-bacterial
- Provides nutrients